

Part 336 for Cathy's blog

Tuesday 17th and Wednesday 18th, March, 2026

Tuesday 17th March, 2026.

Temple Day : Phnom Dei

This is another new temple for us. It is further out from the Angkor Archeological Park than the more "famous" temples.

It is also called Tuol Daun Dei.

It was built by King Yasovarman I (who ruled 889 to 910). It is a hilltop temple (a small hill), with the towers built of bricks.

We were impressed.

First, the journey to get there.....

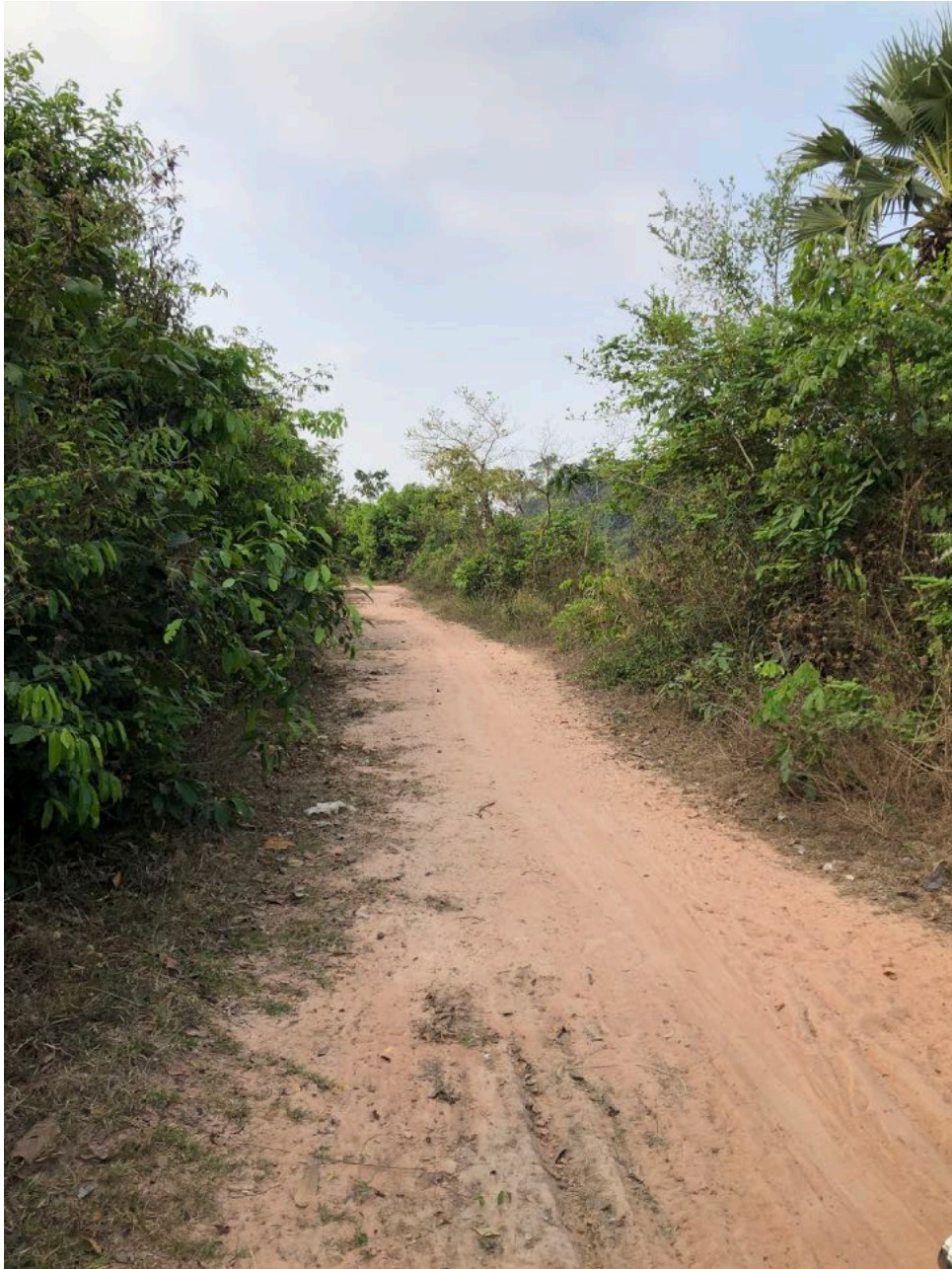


This is the road off the Korean Ring Road, taking us across several man made channels of the Siem Reap River before getting to the temple.





There is still water in these irrigation channels.



And this is the road to the temple (it is wider than some we have been on!)



The first thing we found was this Buddha statue. It was not finished. It was also designed to fit into a “hole”, probably at the entrance to the temple.



This is the base of the statue, carved to fit into the hole.

The temple itself lies in the jungle behind this statue.

The area has not been cleared.





Is this a doorway or a window?



David is walking on a laterite wall. There is a deep basin between the tower ruins I am standing at and this wall.



More sandstone windows and laterite foundations.



Evidence of statues.



One of three brick towers.



More ruins.



The site is quite steep, overgrown and filled with dirt and a thick layer of leaves.



An eastern doorway.



We found these seeds, which twirl as they fall.





Inside one of the towers.

Phnom Dei... a real jungle temple, and well worth a visit if you have the time. **Not visited by many.**



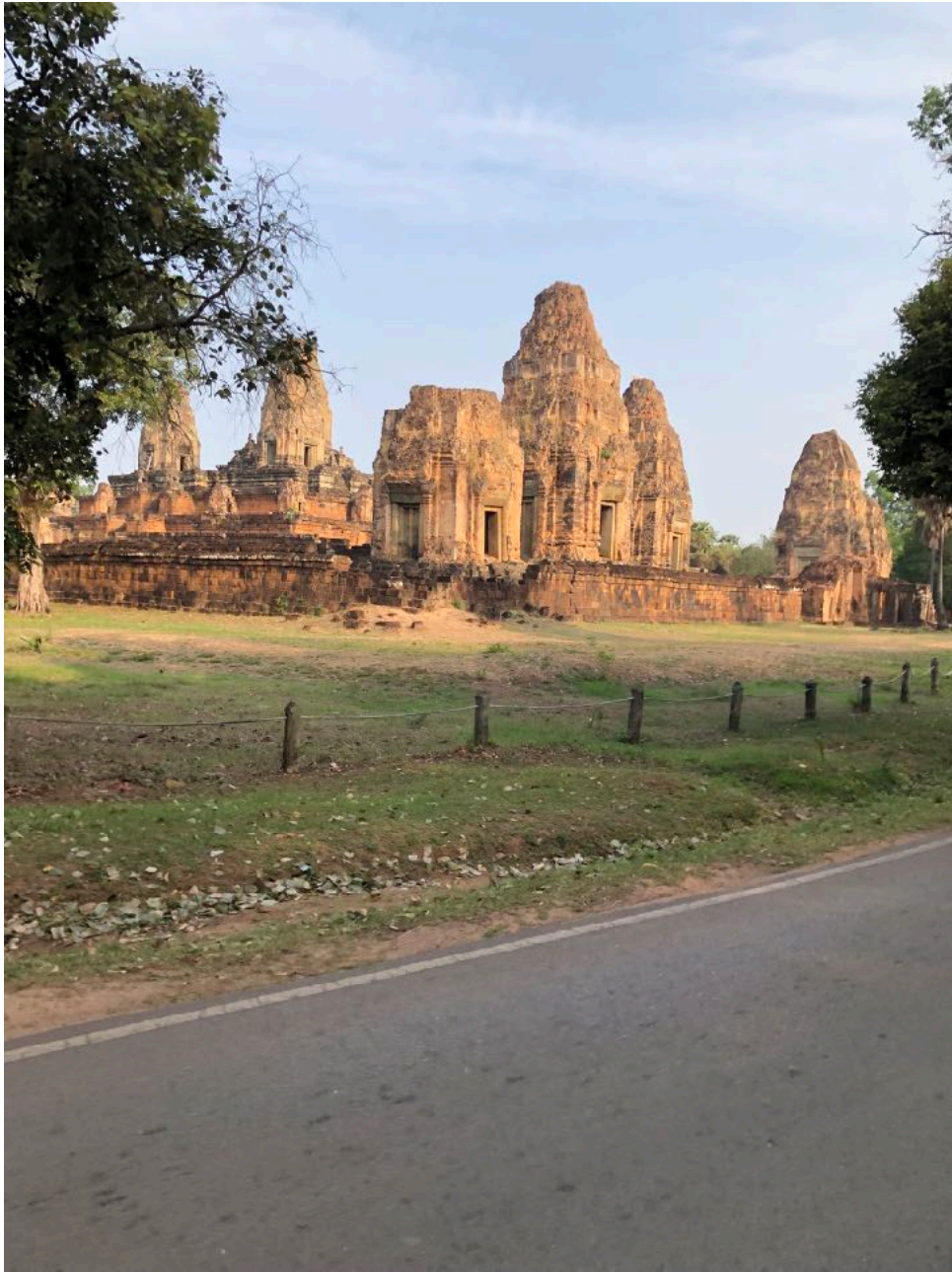
The countryside is quite pretty too. Baby buffaloes look friendly and cute.

Wednesday 18th March, 2026.

Temple Day : Banteay Samre



On our way to Banteay Samre, we came across this man and his dog.



To get to Banteay Samre, we pass several of the more famous temples, including Pre Rup.



(Nearly) all the temples have resident dogs.



Banteay Samre temple is enclosed in a very tall laterite wall.

It's main entrance is to the east, with a long laterite walkway leading to the temple.



Looking east along the walkway.



Steps to the raised platform to the east of the entrance to the temple, guarded by lions.



Patterns carved in the sandstone of the supports for the raised walkway.





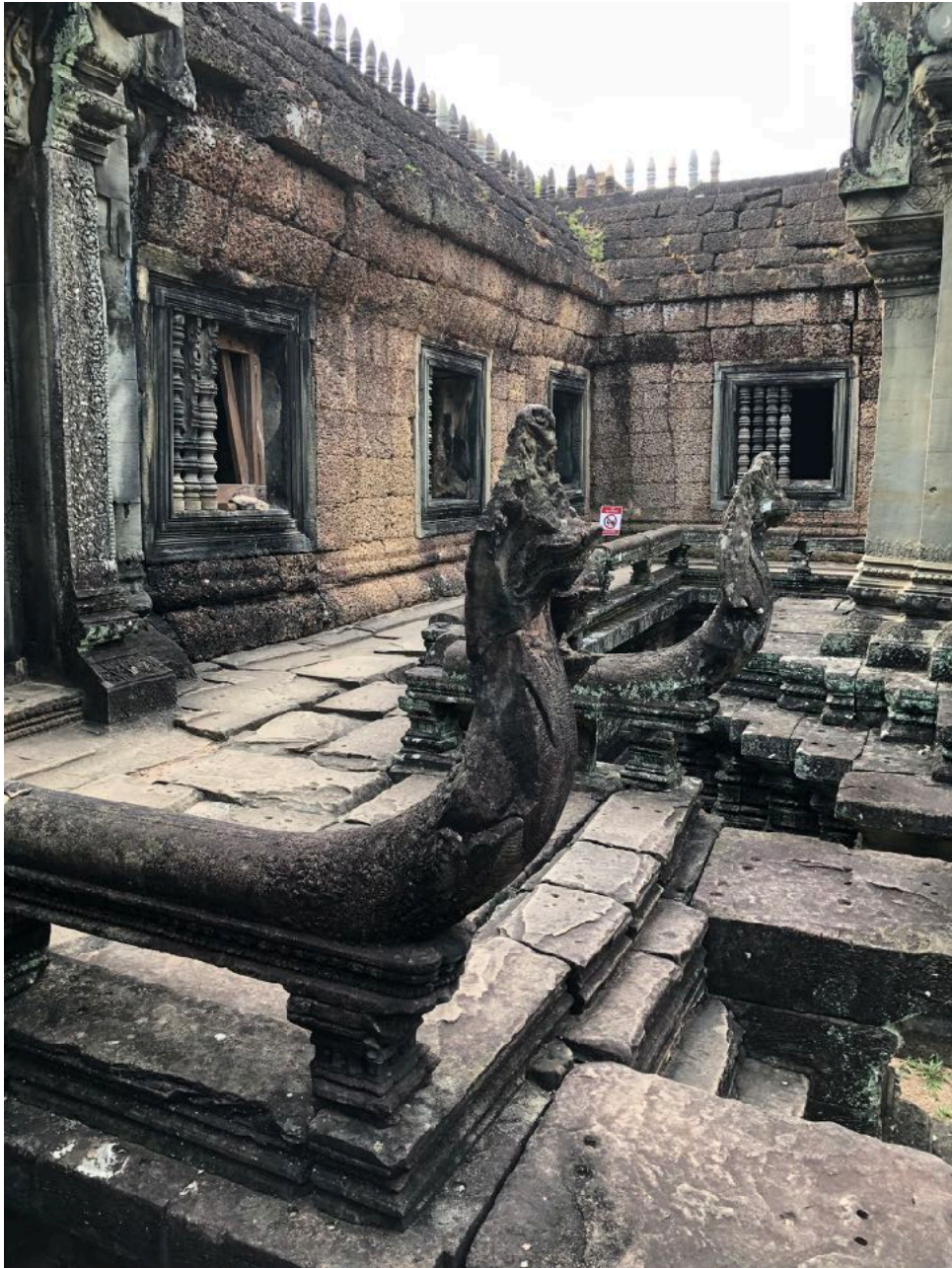
Eastern entrance to Banteay Samre.



The buildings of the temple are raised more than one meter from the ground.



The double row of pillars in the windows show how thick the walls are.

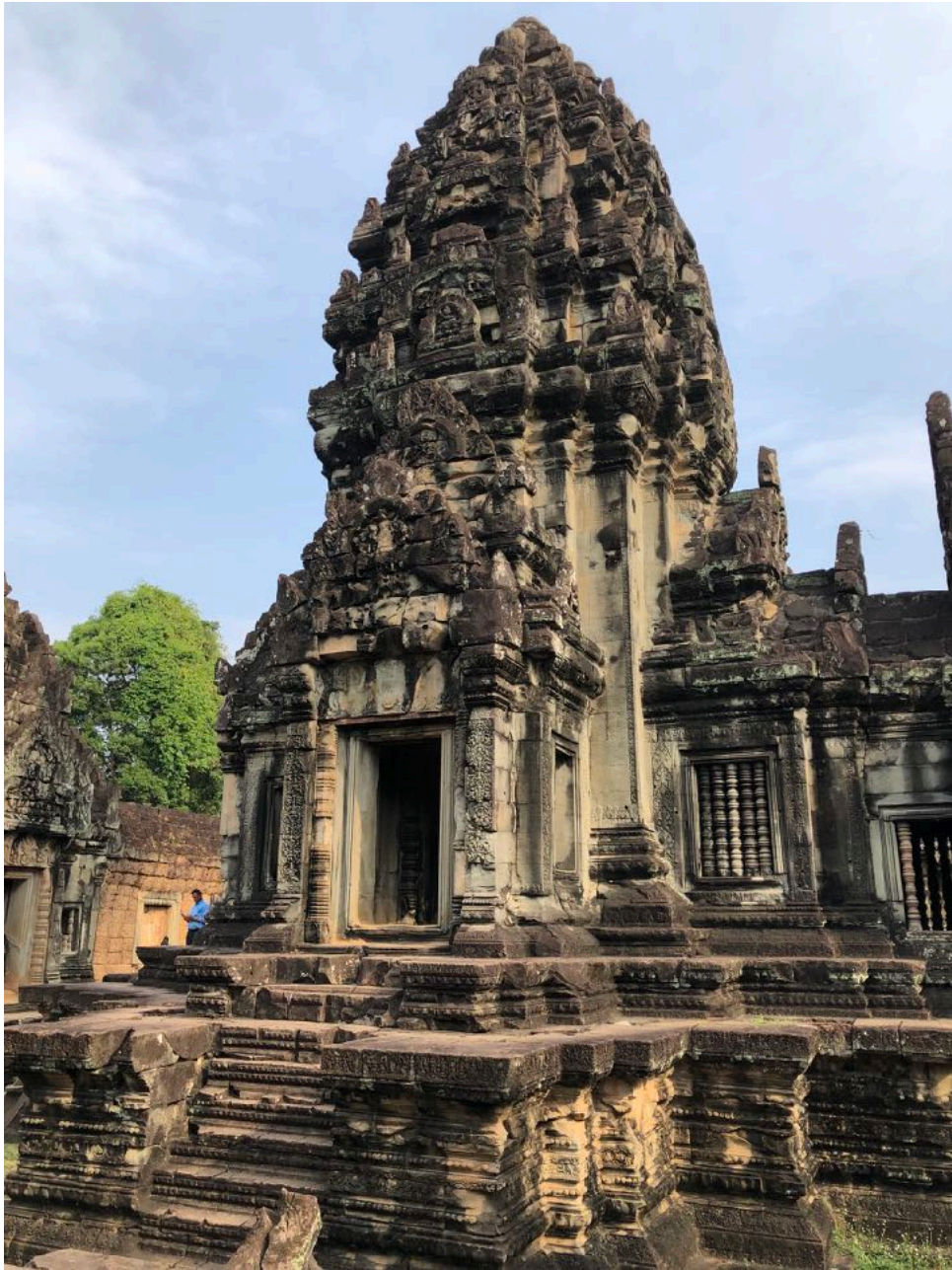


The walkways have balustrades and naga.





The doorways are carved. It is hard to step far enough away to get a photo of the complete carving. (And many are quite worn.)



The central tower.



Carving.



More carving.

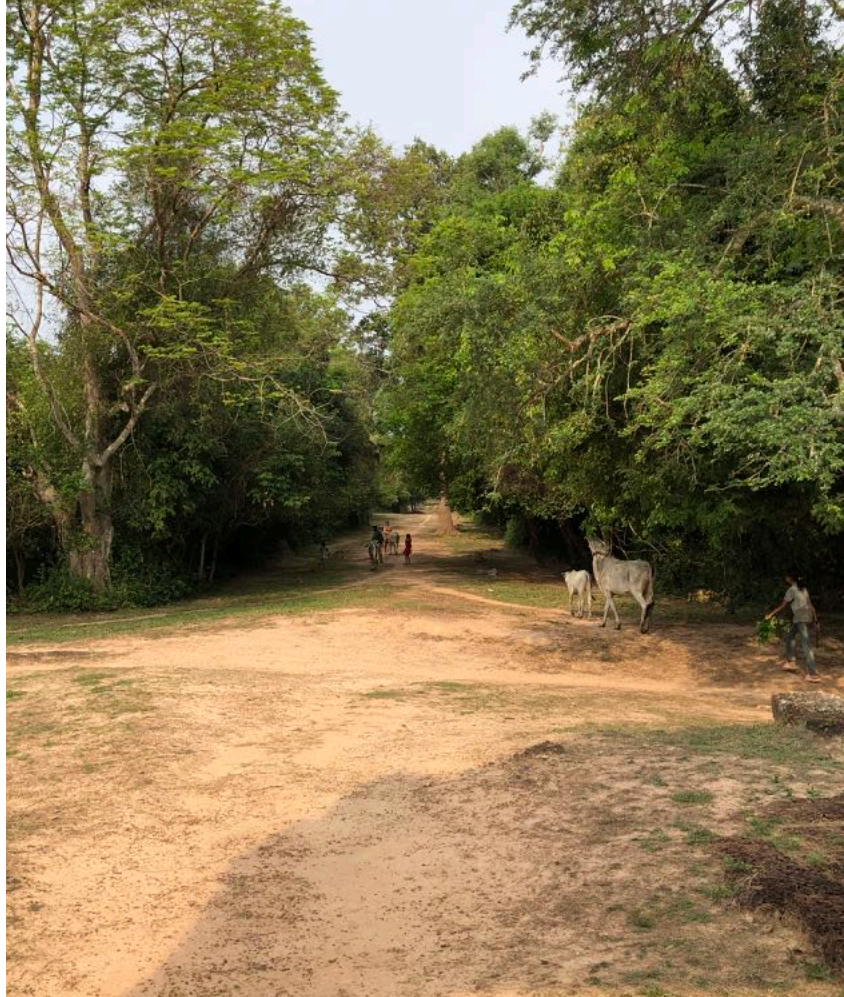


Another carving. Is that a peacock as big as the lion and the bull?

The Apsaras (heavenly dancers) are above them.



Outside the temple, we found different wildlife.



I am standing at the western entrance to Banteay Samre. The children had brought the cows up to the temple and then on to the west.

The sun is hot and it is time to head home.

